

Enforcer™

Patent Pending

Automated Chemical Injection Systems

Enforcing the quality specifications of natural gas, crude oil, liquid petroleum gas and water precisely and efficiently

*Whatever the culprit may be –
H₂S, CO₂, O₂, scale, water,
paraffin, or hydrates –
the **Enforcer** has you covered!*

Proudly made in the USA



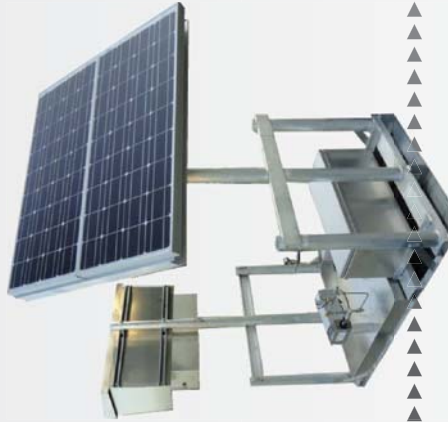
TXAMPumps

Reliable Under Pressure

5623 Tuskegee St.
Houston, TX 77091
Ph: 713.692.6400
Fax: 713.692.6401

Website: www.txampumps.com

The **Enforcer** is a fully automated chemical injection system that **simplifies** complex **chemical injection & corrosion monitoring** anywhere in the world!



The Challenge >>>>>>> The Solution

- Internal corrosion
- H2S in natural gas
- H2S in crude
- H2S in water
- CO2 in natural gas
- O2 in natural gas
- Foam in natural gas
- Chlorides in natural gas
- Hydrates in natural gas
- Water in natural gas
- Paraffin in crude oil
- Water in crude oil
- Oil in water
- Scale in water
- Biological Elements
- Corrosion inhibitors
- H2S scavenger
- H2S scavenger
- CO2 scavenger
- O2 scavenger
- De-foamers
- Water
- Methanol
- Glycol
- Paraffin inhibitor
- De-emulsifiers
- De-oilers
- Scale inhibitors
- Biocide

Features and Capabilities

- 120 VAC, Solar and/or Pneumatic
- PLC operation with local and remote control via modbus and bluetooth
- Radio and cellular communications
- Measurement of contaminants and/or conditions
- Diagnostics via tank level controls and pump output verification
- Alarms for low chemical and pump failure
- Emergency back-up pump activation
- Date/time log for measurements and events (password protected)
- Lightweight skid mounted design

Options > Pending

- Web based control site
- Gas and liquid measurement
- Multiple chemical injection from one skid
- Real time corrosion monitoring

More than just a Chemical Pump

The **Enforcer** automatically injects the correct dosage of chemical to return the product to custody transfer specification.

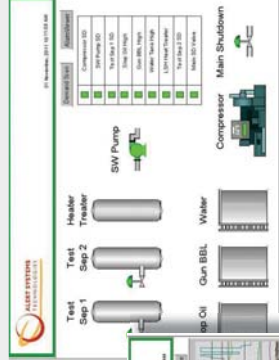
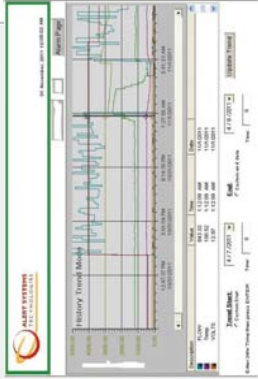


Enforcer™

Patent Pending

Create Your Perfect Solution

With the optional website management software from Alert Systems you can monitor and adjust injection rate based on real time data.



Online Controls

- Injection rate
- Tank levels
- Process conditions
- Diagnostics
- Contamination level

Unparalleled Versatility

The **Enforcer** targets the culprits – H2S, CO2, O2, scale, water, paraffin, or hydrates – and automatically injects the correct dosage of chemical to neutralize the problem.

Ideal for Remote Applications

The **Enforcer** incorporates the best technologies available for a trouble free and reliable watchdog 24 hours a day, 7 days a week!



TM

Monitor > Resolve > Maintain

Internal Corrosion • H2S • CO2 • O2 • Foam • Chlorides
Water • Hydrates • Paraffin • Water • Oil • Scale



5623 Tuskegee St.
Houston, TX 77091
Ph: 713.692.6400
Fax: 713.692.6401
Website: www.txampumps.com

Request for Quote

Enforcer

Company: _____

Contact Name: _____ Phone: _____

Email: _____

Bill to Address: _____

Installation location (for climatic conditions): _____

Process stream: Natural Gas _____ Crude Oil _____ Water _____ Other _____

Max Pressure: _____ Max Temperature: _____

Contaminant and/or condition to be measured (ex. Formation of Hydrates, H2S, CO2) _____

Current chemical class/category used (ex. H2S Scavenger) _____

Injection rate: Gal/Day _____

Power required: 120VAC _____ 12/24VDC _____ Solar _____

*Solar systems are sized according to the total power draw for each system and the maximum days of autonomy

Electrical area classification: Class 1, Div. 2 _____ Class1, Div. 1 _____

Pneumatic back-up pump required: Yes _____ No _____

Use existing pump: Yes _____ No _____ Make and Model _____

Actuation source: Natural Gas _____ Instrument Air _____

Method of communication: Radio _____ Pushup Antenna Required _____ Cell Modem _____ Land Line _____

Existing RTU: Yes _____ No _____ (Describe) _____

Will modbus be required: Yes _____ No _____

Options:

Bluetooth: Yes _____ No _____

Website management: Yes _____ No _____

Number of users _____

Natural gas measurement required (for volumetric injection): Yes _____ No _____ AGA 3: Yes _____ No _____

Liquid measurement required (for volumetric injection): Yes _____ No _____

Bulk tanks with level controls (requires vertical tanks): Yes _____ No _____ Volume(gallons) _____

Existing: Yes _____ No _____ Bulkhead Fitting Size _____

Number of monitoring/injection locations _____ Distance from Enforcer Min _____ Max _____

Pipeline connection size (for chemical injection/corrosion monitoring/process sampling)

(ex. 2" NPT or 1" ANSI 300# RF) _____

Top of pipe access: Yes _____ No _____

Pipeline Diameter _____ Riser Height _____



5623 Tuskegee St.
Houston, TX 77091
Ph: 713.692.6400
Fax: 713.692.6401

Website: www.txampumps.com