

# HBTEXP- "Ž" .

The HBTEXP-BLDC Pump is available in single double head injecting higher volumes or chemicals at separate injection rates. An assortment of plunger sizes and built in stroke length adjustments when combined with TXAM's pump controller and options such as our **ARC200** will allow you to precisely control your injection rates.

The HBTEXP-BLDC Series isolates chemicals away from the pump housing and motor. Standard stainless steel wetted parts are used to ensure long lasting dependability.

The BLDC Series are certified as Class 1, Division 2

*Please contact TXAM for C1, D1 pump motor & pricing.*

## Specifications

### Pump

#### Fluid Head

- Single, Double, Triple, or Quad heads
- Stainless Steel (Standard) or other material

#### Plunger

- 3/16", 1/4", 3/8", 1/2", 1"
- 17-4 PH, optional ceramic coating
- 3-Position adjustable displacement

#### Gear Motor

- 12 VDC, 16 Amp, 67 RPM, 150 lb-in
- No Additional Gear Reduction
- Available: DC Motor with AC Inverter
- UL- C1, D2 Groups A, B, C, & D for Hazardous Locations

#### Connections

- 1/4" Female NPT

#### Bleeder Valve

- 316SS, Located on Head

### Power Option(s)

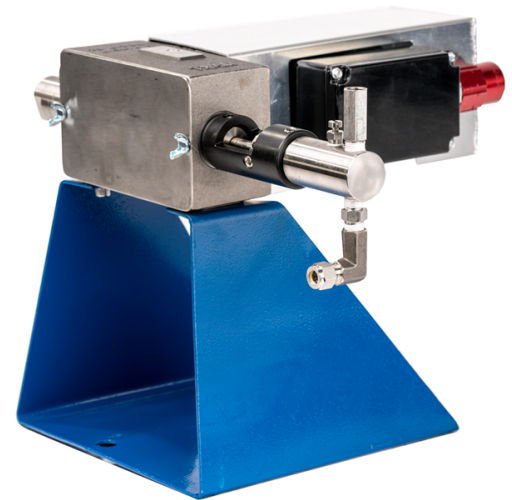
#### Electric / DC

- 12 VDC
- AC Inverter

### Pump Control

#### Control Options

- TXAM Controller options
- Plunger stroke length adjustments
- 4-20mA, RS-232, RS-485, Modbus
- Plunger Style: (ARC200) Adjustable Rate Control

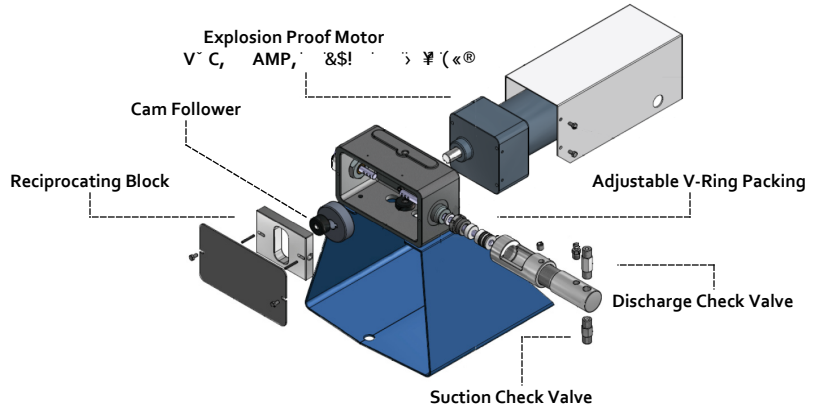


**ZERO Venting of Gas**  
**LOW Cost of Ownership**  
**FAST Return On Investment**

**Max Pressure: 5000 PSI/400 Bar**  
**0 GPD to 200 GPD**

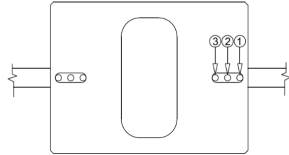
- \* Single or Double head configuration
- \* Pump two chemicals at two separate rates with a single pump
- \* Stainless Steel head assembly
- \* Stainless Steel pump housing
- \* Multiple rate control operations within one pump controller
  - \* Plunger stroke adjustment
  - \* Adjustable V-Ring packing

# HBTEXP- "Z"



**PIN PLACEMENT**

Pin Positions	Stroke Lengths
1	1.123
2	0.872
3	0.622



HBT Pump Specifications															
Plunger Size	3/16" (0.1875)			1/4" (.25)			3/8" (0.375)			1/2" (0.50)			1" (1.00)		
Pin Position	1	2	3	1	2	3	1	2	3	1	2	3	1	2	3
Plunger Cross Section Area (in <sup>2</sup> )	0.0276			0.0491			0.1104			0.1963			0.7854		
Stroke Lengths @ Different Pin Positions	1.1230	0.8720	0.6220	1.1230	0.8720	0.6220	1.1230	0.8720	0.6220	1.1230	0.8720	0.6220	1.1230	0.8720	0.6220
Displacement Per Stroke (Cubic Inches)	0.0310	0.0241	0.0172	0.0551	0.0428	0.0305	0.1240	0.0963	0.0687	0.2204	0.1712	0.1221	0.8820	0.6849	0.4885
Displacement Per Stroke (Fluid Ounces)	0.0172	0.0133	0.0095	0.0305	0.0237	0.0169	0.0687	0.0534	0.0381	0.1222	0.0948	0.0677	0.4887	0.3795	0.2707

## Dimensions

