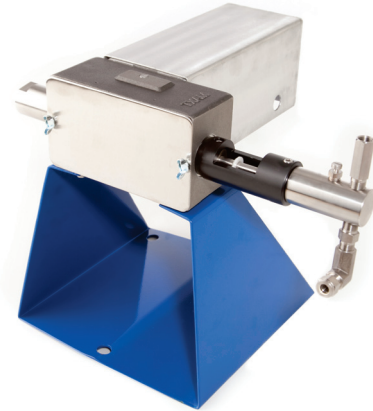


HBT₂

The HBT₂ Pump is available in AC or DC power options and offers single or double heads for injecting higher volumes or two chemicals at separate injection rates. An assortment of plunger sizes and built-in stroke length adjustments when combined with TXAM's pump controller and options such as our *FCV5000* will allow you to precisely control your injection rates.

The HBT Series isolates chemicals away from the pump housing and motor. Standard stainless steel wetted parts are used to ensure long lasting dependability.

See TXAM's Pump Controller and FCV5000 data sheets for more detail.



Specifications

Pump

Fluid Head

- Single or Double
- Stainless Steel (Standard) or other material

Plunger

- 3/16", 1/4", 3/8", 1/2"
- 17-4 PH, optional ceramic coating
- 3 Position adjustable displacement

Motor

- 12VDC, .22 HP, 66 RPM or 1/6 HP, 90 RPM

Connections

- 1/4" Female NPT

Bleeder Valve

- 316SS, located on head

Power Option(s)

Solar / DC

- 12VDC

Solar

- 80, 110, or 130 Watt

Battery

- 6V or 12V (Sized per application)
- AGM or Lead acid

Pump Control

Control Options

- TXAM Controller options
- Plunger stroke length adjustments
- Flow Control Valve (FCV 5000)
- 4-20 mA, RS-232, RS-485, Modbus

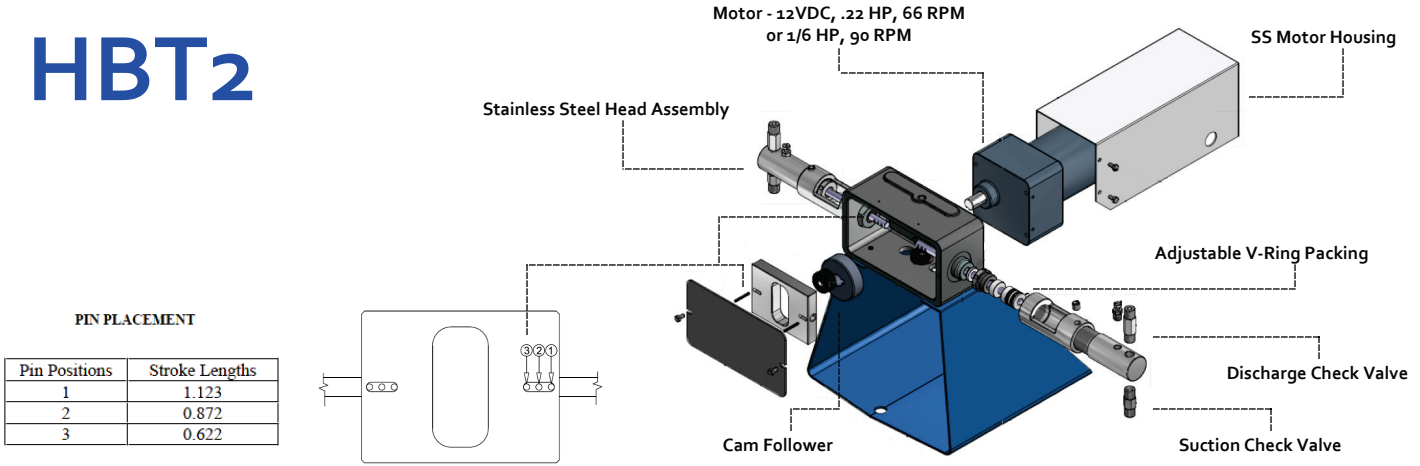
ZERO Gas Emissions
LOW Cost of Ownership
FAST Return On Investment

Max Pressure: 6000 PSI/400 Bar

0 GPD to 200 GPD

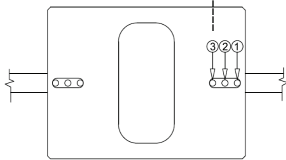
- * Single or double head configuration
- * Pumps multiple chemicals at separate rates
 - * Stainless Steel head assembly
 - * Stainless Steel pump housing
 - * Multiple rate control options
- * Plunger has a built-in stroke adjustment
 - * Adjustable V-Ring packing

HBT₂



PIN PLACEMENT

Pin Positions	Stroke Lengths
1	1.123
2	0.872
3	0.622



HBT Pump Specifications															
Plunger Size	3/16" (0.1875)			1/4" (.25)			3/8" (0.375)			1/2" (0.50)			1" (1.00)		
Pin Position	1	2	3	1	2	3	1	2	3	1	2	3	1	2	3
Plunger Cross Section Area (in ²)	0.0276			0.0491			0.1104			0.1963			0.7854		
Stroke Lengths @ Different Pin Positions	1.1230	0.8720	0.6220	1.1230	0.8720	0.6220	1.1230	0.8720	0.6220	1.1230	0.8720	0.6220	1.1230	0.8720	0.6220
Displacement Per Stroke (Cubic Inches)	0.0310	0.0241	0.0172	0.0551	0.0428	0.0305	0.1240	0.0963	0.0687	0.2204	0.1712	0.1221	0.8820	0.6849	0.4885
Displacement Per Stroke (Fluid Ounces)	0.0172	0.0133	0.0095	0.0305	0.0237	0.0169	0.0687	0.0534	0.0381	0.1222	0.0948	0.0677	0.4887	0.3795	0.2707

Dimensions

